

STREAM VAC™

Dust Collection and Fume Extraction system for spot applications – portable, low cost, maintenance free

WHAT ARE THEY - REASONS TO USE

The versatile and affordable compact air cleaning system is ideal for the removal of fumes, dust and other air pollution from work stations without the need for heavy and bulky machinery. The **Nex Flow™ Stream Vac™** is an in line air conveyor that when hooked up to a 2" hose and connected to a compressed air line, it will remove up to several hundred cubic feet of air while using only a minimal amount of compressed air, taking with it welding fumes, soldering fumes, particulate from local grinding operations, smoke and particulate from almost any "spot" application.

A safe and improved healthy condition in the workplace improves employee morale, increases worker productivity, decreases absenteeism and even reduces insurance costs in many cases. A cleaner environment can even enhance the performance of machinery and sometimes cut maintenance costs. However, until now there was no low cost solution to enhance the environment.

The low cost, compact and portable, the unit operates utilizing a minimal amount of compressed air. It comes with a magnetic stand to "plug into position" on any magnet accepting metal surface. Simply connect the snap – on collection attachments and clamp a 2" hose on the opposite side, hook up your compressed air and you are set to go.



STREAM VAC™ FEATURES :

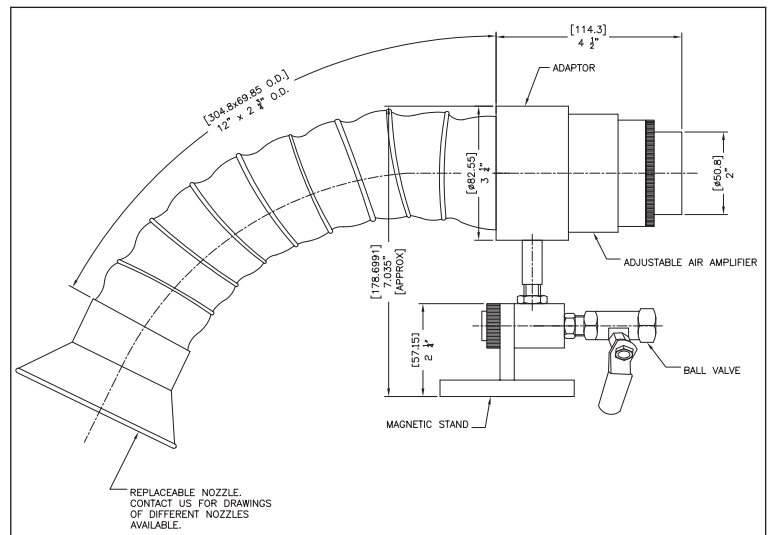
- ▶ No moving parts.
- ▶ Driven by air not electricity.
- ▶ Compact and portable - easy to install.

STREAM VAC™ BENEFITS:

- ▶ Maintenance Free
- ▶ Safe – no electricity
- ▶ Simple to install and use – portable



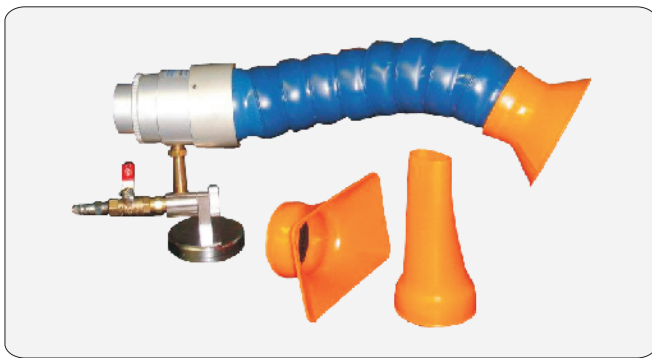
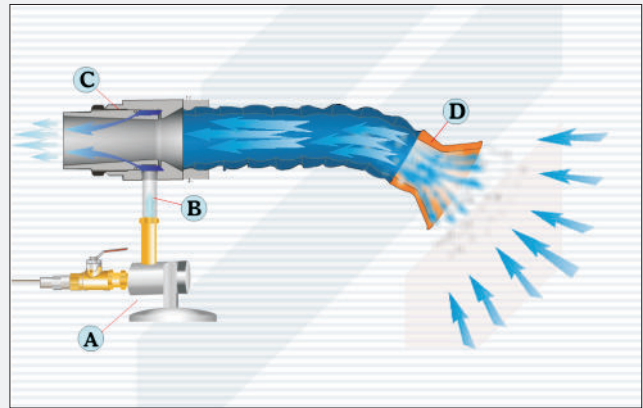
↑ Stream Vac™ removing soldering fumes from a circuit board soldering station



SPECIALTY SMART N CLEVER™ PRODUCTS™

STREAM VAC™ - HOW IT WORKS:

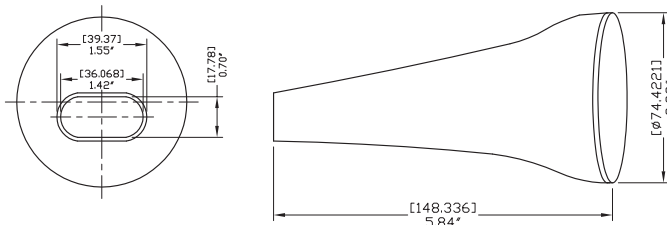
The Stream Vac™ is used for the removal of fumes, smoke, dust and particulate at any workbench location with a base that will support the strong magnetic “swivel” base (A) for flexible position of the system. Compressed air is piped in at point (B) on the air amplifier (which is also adjustable to control the suction). Fumes, smoke and particulate enter at (C) and a 2” hose (Customer supplied) at (D) takes the material to a safe location. Three different suction attachments are available. Manual shutoff valve included.



SPECIFICATIONS:

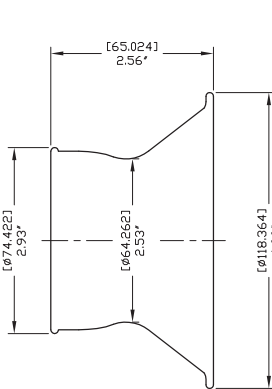
The Stream Vac™ uses only 20 SCFM (567 SLPM) at 80 PSIG (5.5 bar) yet will move up to 16 times that volume of air drawing in fumes, dust, smoke and particulate. Standard inlet is 3/8” NPT. Clean, dry air is recommended and an optional filter with automatic drain is available. Three types of suction attachments are supplied in the package which has a strong magnetic base to secure its position.

The Stream Vac™ includes a Model 40002 adjustable air amplifier, magnetic base, manual shutoff valve, all attachments and fittings, and three inlet attachments: round nozzle, rectangular nozzle and tapered oval nozzle.

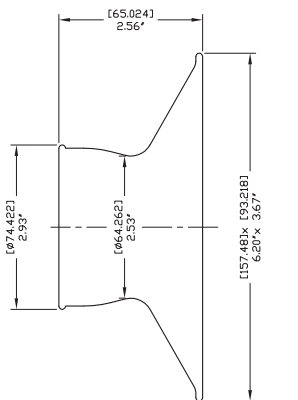


58884 - TAPERED NOZZLE

PART NO.	DESCRIPTION
40002FMS	Stream Vac™ fume removal system c/w magnetic swivel base, assembly, and hose kit
90004	Filter with auto drain
90005	Oil Removal filter with auto drain



58882 - ROUND NOZZLE



58883 - RECTANGULAR NOZZLE

Stream Vac™ used on manufacturing line to remove welding fumes.

